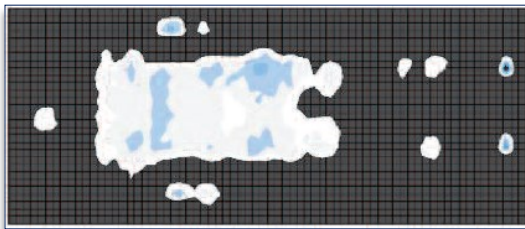


- Dynamic Immersion
- True Low Air Loss
- Alternating Pressure

Featuring true low air loss, providing microclimate control, immersion/pulsation therapy, alternating pressure and massage, the Advanced WAVE™ Support Surface has become a proven and often preferred alternative to Air Fluidized Therapy. By continuously sensing and maintaining an optimal therapeutic setting, The WAVE™ automatically adjusts and readjusts for the patient as needed. It is the most effective means of multi-zoned, dynamic low interface pressure therapy in the market today.

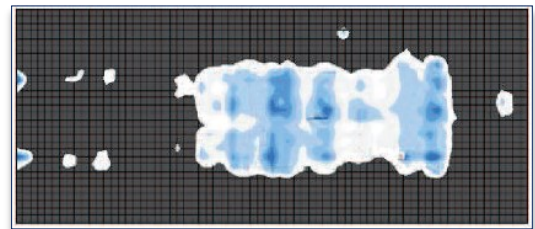


Patient Laying Flat



Mapping* indicates the WAVE mattress maintained interface pressure within recommended therapeutic range (13~17mmhg) throughout the course of the study.

HOB at 30°



Mapping* the WAVE mattress maintained interface pressure within the recommended therapeutic range (13~17mmhg) for the majority of the study and never exceeded capillary closing pressure of 32mmhg.

**Mapping was conducted on an anatomically correct male, 5'9" tall, 175 lbs.*

Longer Immersion Time = Faster Healing and Recovery

Advanced WAVE™

Our proprietary line of therapeutic support surfaces featuring the innovative WAVE Technology™ was designed with clinical input to provide the highest levels of protection and functionality. When combined with our Freedom500™ and Freedom1000™ bed frames, our exclusive WAVE™ technology surfaces provide unprecedented levels of safety for both patients and caregivers.

For Treatment of ⁽¹⁾:

- Complicated wounds
- Flaps
- Grafts
- Burns
- General pain management

Features / Benefits:

- True low air loss
- Standard and bariatric sizes
- Quiet operation
- Dynamic immersion/pulsation
- Non-heat generating
- Alternating pressure
- Microclimate control



Model	Length	Width	Height	Wt. Cap.
UMS ⁽²⁾	72"/76"/80"	36"	8"	500 lbs.
XMS	80"/85"/90"	36"/42"/48"	10"	1000 lbs.
VL	80"/85"/90"	36"	8"	500 lbs.

⁽¹⁾Contraindications: Unstable cervical neck, spine and pelvic girdle.

⁽²⁾Base can be configured to fit Step-Down, and V-Deck beds.